

Leroy Van Allen
P. O. Box 196
Sidney, OH 45365
vams@woh.rr.com

November 7, 2016

Don Lange
1000 N. Locust St.
New Berlin, WI 53151

18.00. Lange

Enclosed are your two 1881 O Morgan dollars plus computer prints of photographs of new varieties taken with a digital camera thru a stereo microscope. Two *new* 1881 O listing!

My comments on the coins are as follows:

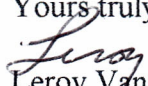
81 O-- New VAM 71. Yes, has tripled left wreath & dbld legend with O tilted left of VAMs 38, 41 & 51. Same fine pitting on 2 leaves opposite IT of UNITED of VAM 38. Unlisted obv with dbld 18-1. So is new die variety.

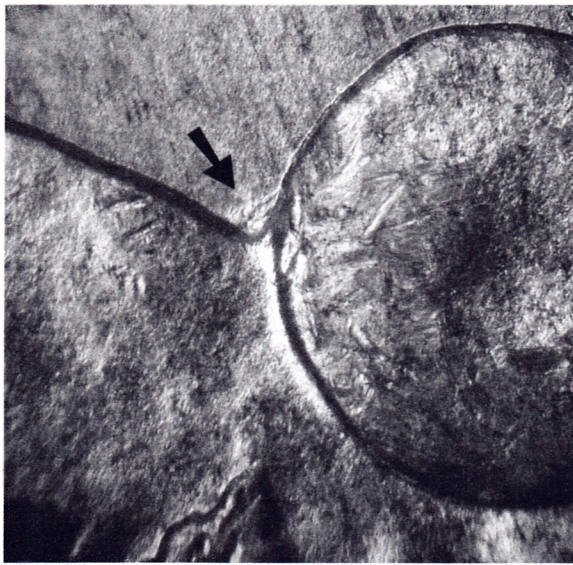
81 O PCGS 813150-- New VAM 24 Die 2. Rt 1 has notch left side of VAM 24. Doesn't have die marker of 24 Die 1 of die scratch top rt of top cotton leaf. So is Die 2 with short spike at top left inside of left 8 upper loop. Not much pitting in eagle's wing-neck gap. No dblg on rev. VAM 68 listed as O titled left of C³d which this coin doesn't have. Normal C³a rev for VAMs 1, 19, 55 & 66. Hard to find useable die markers for obv & rev that could be easily seen with 10X loupe.

The description of the new die variety is as follows:

	1881 O			
24	III ² 14 • C ³ a (Doubled Right 1)	(176)	I-2	R-5
	Obverse III²14-- Die 2- Right 1 doubled as notch at lower left side of vertical shaft. Left 8 has short spike in upper left inside of upper loop. <i>Die marker-</i> Single diagonal polishing line in vee between cap top and fold.			
	Reverse C³a-- <i>Die marker-</i> Several short horizontal die polishing lines at lower right outside of eagle's right leg.			
71	III ² 48 • C ³ p (Doubled 18-1, Tripled Left Wreath, Doubled Legend, O Tilted Left) (176)		I-2	R-5
	Obverse III²48-- Slightly doubled 18-1 with left 1 at top right of vertical shaft, left 8 at top outside and right 1 as notch at lower left outside of vertical shaft. Very slight doubling of ear at right inside and earlobe. <i>Die marker-</i> Single diagonal polishing line at bottom right of YH in LIBERTY continuing over into hair.			

Thanks again for sharing your coin die varieties!

Yours truly,

Leroy Van Allen



1881 O VAM 24 Die 2- Die marker- Single Line Cap Vee



1881 O VAM 24 Die 2- Doubled Right 1 Shaft



1881 O VAM 24 Die 2- Die marker- Lines at Eagle's Rt. Leg



1881 O VAM 71 Die marker- Diagonal Polishing Line Y Bottom



1881 O VAM 71 Doubled 18



1881 O VAM 71 Doubled 1